

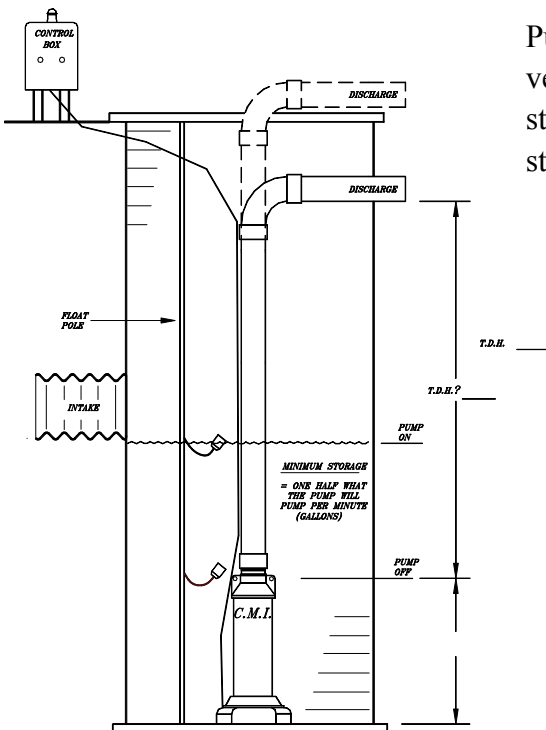
# STAINLESS STEEL AXIAL FLOW SUBMERSIBLE PUMPS



Carry Pumps are an economical solution to all your water management needs. These pumps are well suited for high volume, low head applications like aquaculture fish farming, agricultural field drainage, golf course watering systems, landscaping waterfalls, artesian wells, and fountains, municipal storm water systems, subdivisions, manufactured home communities, parking lots, water transfer and sub-irrigation.

- Corrosion Resistant Stainless Steel Construction
- High Volume: 50 to 1,450 Gallons Per Minute
- Low Head: 2' to 25' of Total Dynamic Head
- Available in Single or Three Phase
  - 1/2 to 15 Horsepower
  - 200, 230, 460 or 575 Volts
- Axial-Flow lift for smooth, low vibration, low pressure operation
- Rated for up to 30 cycles per hour or continuous duty
- Economical and efficient to operate
- Water lubricated motor - environmentally safe

All Carry Pumps are built to last. With Stainless Steel Construction and durable Franklin Electric motors and controls, your pump should give you many years of trouble free operation. All products come with a one year limited warranty against manufacturer's defects and workmanship.



**Typical Drainage Installation**

Pumps are available in vertical or horizontal styles with or without strainer screens.



**For more information or a free estimate,  
call Carry Manufacturing today!**



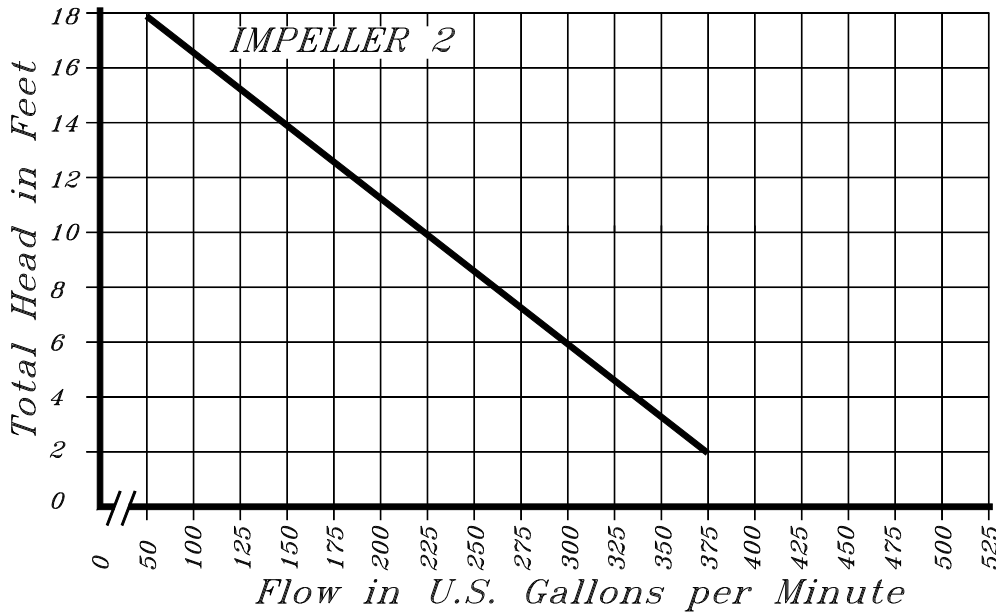
**Carry Manufacturing, Inc.**

1514 S. Knight Road, Munger, MI 48747-9703

(989) 659-3500 or 1-800-492-2779

Fax: (989) 659-3506 [www.carrymfg.com](http://www.carrymfg.com)

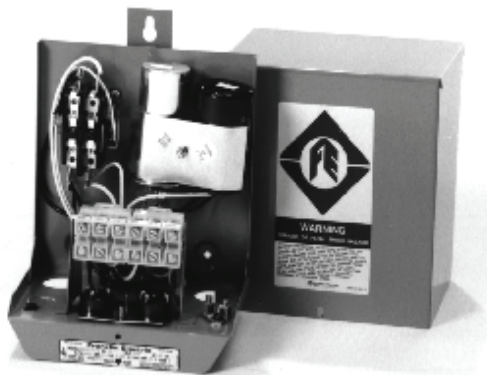
# STAINLESS STEEL AXIAL FLOW SUBMERSIBLE PUMPS



2 HP pumps are available in either vertical or horizontal styles and are available in single phase, 230 volts or three phase in 200, 230, 460 or 575 volts.

Single phase and three phase pumps require a control panel for proper operation.

## 2 HP PERFORMANCE CURVE



Single Phase Control Panels are used for Single Phase, 3-Wire Pumps only. These controls contain the start and run capacitors to operate the motor and are available with or without a switch (delux).

Three Phase Control Panels are used for Three Phase, 200, 230 or 460 Volt Pumps. These controls contain a motor starter and a transformer and are available with or without a switch and pump run light (delux).

DFD Floats are used with both Single and Three Phase pumps and Control Panels. These devices turn the pump on and off with the water level.

Pump Description (Effective 02/01/10)	Vertical Style	Horizontal Style
Single Phase, 230 Volt Pump, Delux Control Panel and DFD Floats	\$2,931.45	\$2,861.45
Three Phase, 200 Volt Pump, Delux Control Panel and DFD Floats	\$4,214.17	\$4,154.17
Three Phase, 230 Volt Pump, Delux Control Panel and DFD Floats	\$4,214.17	\$4,154.17
Three Phase, 460 Volt Pump, Delux Control Panel and DFD Floats	\$4,179.17	\$4,119.17
Three Phase, 575 Volt Pump, Delux Control Panel and DFD Floats	\$4,179.17	\$4,119.17